

LOOKBOOK

AMIATA PULLOVER

BY SANDRA GUTIERREZ





The Amiata Pullover is the newest addition to a collection that honors the majestic landscapes surrounding iconic volcanoes, paired harmoniously with the *Etna Tee*, *Vesuvius Tee* and *Sabatini Cardigan*.

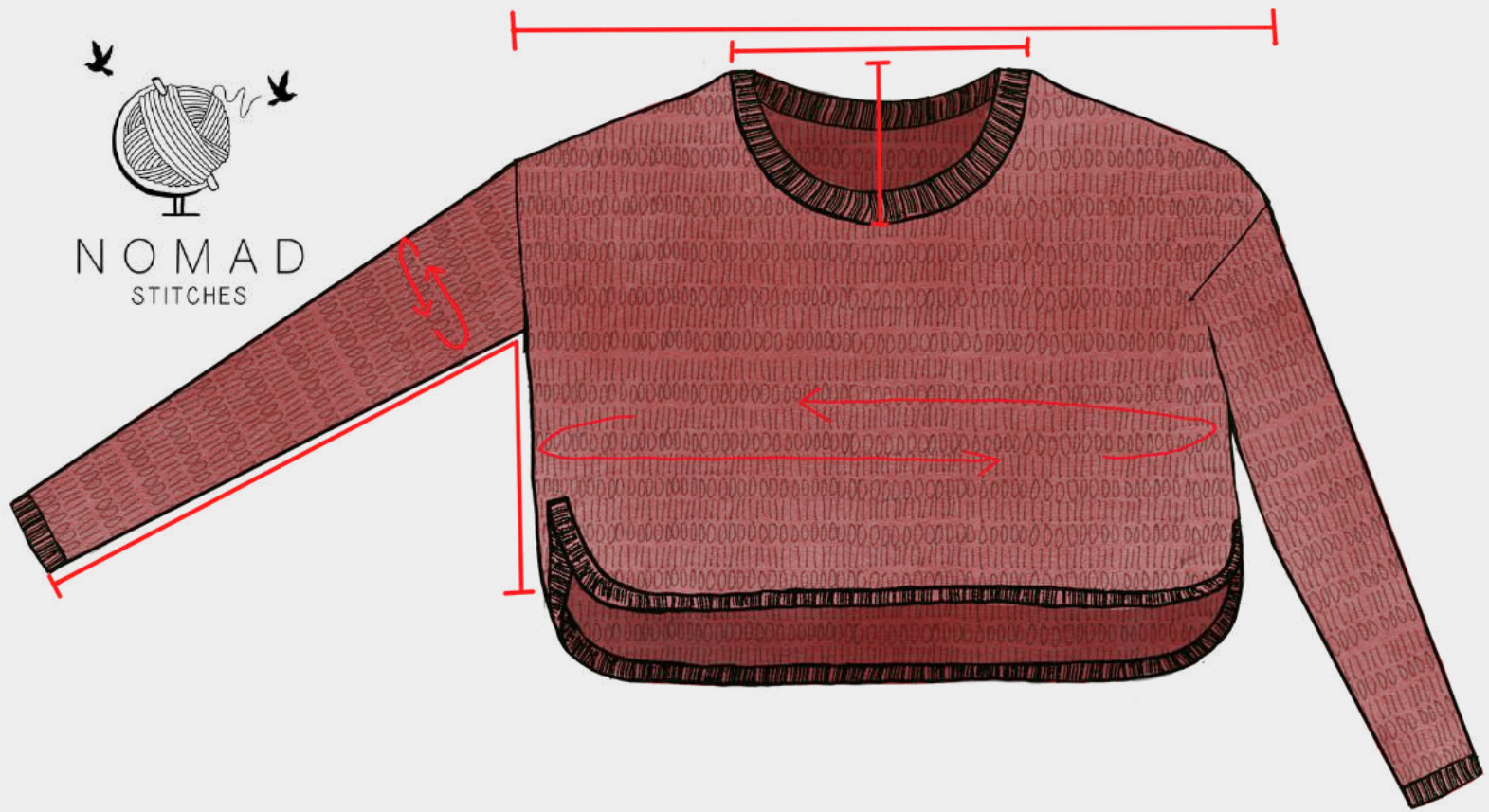
Amiata is made top-down with a drop-shoulder construction and has perfectly fitted shoulders to eliminate excess fabric around the underarms. The pullover features a textured and airy stitch that is light yet warm, a wide over-sized fit, tapered sleeves and a split high-low hem; all finished with an elegant ribbing. What sets Amiata apart is its commitment to size inclusivity ensuring that the shoulder drops gracefully in the same spot for all makers, irrespective of their size. The meticulous details woven into this pullover promise a timeless piece that you'll find yourself reaching for time and time again.

#AmiataPullover



SAMPLE DETAILS

Sample is size 4. Model measures ~104 cm / 41 in at bust wearing the sample with 18 cm / 7 in of positive ease.
Yarn used: [Retrosaria Rosa Pomar, Mondim](#)
(100% fine Portuguese wool, 100g, 385 m / 421 yds) in color C587.



SIZES & MEASUREMENTS

THE FOLLOWING ARE THE FINISHED GARMENT MEASUREMENTS PER SIZE: 1 (2, 3, 4, 5) (6, 7, 8, 9)

These are the approximate measurements of the finished item:

- Bust*: 93.5 (102.5, 113.5, 122.5, 132) (142.5, 150, 161, 171) cm / 37 (40 $\frac{1}{2}$, 44 $\frac{3}{4}$, 48 $\frac{1}{4}$, 52) (56 $\frac{1}{4}$, 59, 63 $\frac{1}{4}$, 67 $\frac{3}{4}$) in
- Shoulder Width: 50.5 (52.5, 56.5, 59.5, 62.5) (63, 62.5, 66, 66) cm / 19 $\frac{3}{4}$ (20 $\frac{1}{2}$, 22 $\frac{1}{4}$, 23 $\frac{1}{2}$, 24 $\frac{1}{2}$) (24 $\frac{3}{4}$, 24 $\frac{1}{2}$, 26, 26) in
- Neck Width (w/o neckline): 17.5 (17, 18.5, 18.5, 18.5) (19.5, 21.5, 22.5, 22.5) cm / 7 (6 $\frac{1}{2}$, 7 $\frac{1}{4}$, 7 $\frac{1}{4}$, 7 $\frac{1}{4}$) (7 $\frac{3}{4}$, 8 $\frac{1}{2}$, 8 $\frac{3}{4}$, 8 $\frac{3}{4}$) in
- Front Neck Depth (w/o neckline): 12.5 (12.5, 14, 14, 14) (15, 15, 16.5, 16.5) cm / 5 (5, 5 $\frac{1}{2}$, 5 $\frac{1}{2}$, 5 $\frac{1}{2}$) (6, 6, 6 $\frac{1}{2}$, 6 $\frac{1}{2}$) in
- Sleeve Circum: 32.5 (33.5, 35.5, 38, 41) (48, 51, 53.5, 56.5) cm / 13 (13 $\frac{1}{4}$, 14, 15, 16) (19, 20, 21, 22 $\frac{1}{4}$) in.
- Body Length from underarm at front**:
 - 24.5 (24.5, 23.5, 23.5, 21.5) (19.5, 19.5, 18.5, 17) cm / 9 $\frac{1}{4}$ (9 $\frac{1}{2}$, 9 $\frac{1}{4}$, 9 $\frac{1}{4}$, 8 $\frac{1}{4}$) (7 $\frac{1}{2}$, 7 $\frac{1}{2}$, 7 $\frac{1}{4}$, 6 $\frac{3}{4}$) in for a cropped pullover
 - 39.5 (39.5, 38.5, 38.5, 36.5) (34.5, 34.5, 33.5, 32) cm / 15 $\frac{1}{2}$ (15 $\frac{1}{2}$, 15 $\frac{1}{4}$, 15, 14 $\frac{1}{4}$) (13 $\frac{1}{2}$, 13 $\frac{1}{2}$, 13, 12 $\frac{1}{2}$) in for a full-length pullover.
- Sleeve Length from underarm**: 42 (43, 43, 44.5, 44.5) (45.5, 45.5, 47, 47) cm / 16 $\frac{1}{2}$ (17, 17, 17 $\frac{1}{2}$, 17 $\frac{1}{2}$) (18, 18, 18 $\frac{1}{2}$, 18 $\frac{1}{2}$)

**To be worn with 15 - 21 cm / 6 - 8 $\frac{1}{4}$ in of positive ease around bust*

***Adjustable to taste. Including cuff and hem.*



YARDAGE REQUIREMENTS

YARN: Fingering weight yarn (size 1)

Approx 1460 (1595, 1735, 1905, 2040) (2260, 2365, 2590, 2735) m / 1600 (1745, 1895, 2085, 2230) (2470, 2585, 2830, 2990) yds for a cropped high-low hem as sample.

Approx 1750 (1910, 2085, 2285, 2445) (2700, 2825, 3085, 3265) m / 1915 (2090, 2280, 2500, 2675) (2955, 3090, 3375, 3570) yds for a full-length high-low hem pullover.

Every 5 cm / 2 in of added length in the body will add approx 95 (100, 115, 120, 130) (140, 150, 160, 170) m / 100 (110, 125, 135, 145) (155, 160, 175, 185) yds of yarn.

Yardage provided includes 5% extra for swatching and margin of error. Adjust amounts for desired length.

You will need approximately the following amount of balls of Retrosaria Rosa Pomar,

Mondim: 4 (5, 5, 5, 6) (6, 7, 7, 8) balls of Mondim for a cropped pullover and 5 (5, 6, 6, 7) (8, 8, 9, 9) balls for a full-length pullover.

ALTERNATIVE YARNS

Any fingering weight yarn will work. Here are some I recommend based on their weight and fiber content. There are also some recommendations for warmer weather climates!

- [We Crochet, Stroll Fingering](#) (75% Fine Superwash Merino Wool, 25% Nylon)
- [We Crochet, Comfy Fingering](#) (75% Pima Cotton, 25% Acrylic)
- [Along Avec Anna, Merino](#) (100% Superwash Merino Wool)
- [Cascade Heritage, Solids](#) (75% Merino Wool, 25% Nylon)
- [Sirdar, Country Classic 4 Ply](#) (50% Merino Wool, 50% Acrylic)

CHANGES AFTER TESTING

Thanks to testers' feedback, the pattern now includes ribbing alternatives for those who find the slst ribbing too taxing.

PATTERN OVERVIEW

ABOUT

The KnitPicks® is a brand of yarn that is known for its quality and softness. It is made from 100% wool and is available in a variety of colors. The KnitPicks® is a brand of yarn that is known for its quality and softness. It is made from 100% wool and is available in a variety of colors.

Yarn Color: Red

Yarn Weight: 4 (Medium)

Yarn Length: 100 yards (91.4m)

Yarn Care: Machine washable, tumble dry low.

TECHNIQUES

2-Step Knit Stitch: This is a simple knit stitch that is worked in two steps. It is a good technique for beginners and can be used for a variety of projects.

3-Step Knit Stitch: This is a more complex knit stitch that is worked in three steps. It is a good technique for experienced knitters and can be used for a variety of projects.

4-Step Knit Stitch: This is a very complex knit stitch that is worked in four steps. It is a good technique for advanced knitters and can be used for a variety of projects.

THE PATTERN

Back: This is the back of the garment. It is made from a single piece of fabric and is worked in a simple knit stitch. The back is worked from the waist up to the neck.

Front: This is the front of the garment. It is made from a single piece of fabric and is worked in a simple knit stitch. The front is worked from the waist up to the neck.

Sleeves: These are the sleeves of the garment. They are made from a single piece of fabric and are worked in a simple knit stitch. The sleeves are worked from the shoulder down to the wrist.

Neckline: This is the neckline of the garment. It is made from a single piece of fabric and is worked in a simple knit stitch. The neckline is worked from the neck down to the chest.

FROM THE DESIGNER

The designer of this pattern is a professional knitter and has a wealth of experience in the field. They have designed many patterns for a variety of projects and have a deep understanding of the craft of knitting.

The designer of this pattern is a professional knitter and has a wealth of experience in the field. They have designed many patterns for a variety of projects and have a deep understanding of the craft of knitting.

SLEEVE CHARTS - Sizes (S, M, L)

These charts provide the measurements for the sleeves of the garment. They are worked in a simple knit stitch and are a good technique for beginners and experienced knitters alike.

These charts provide the measurements for the sleeves of the garment. They are worked in a simple knit stitch and are a good technique for beginners and experienced knitters alike.

FROM THE DESIGNER

The designer of this pattern is a professional knitter and has a wealth of experience in the field. They have designed many patterns for a variety of projects and have a deep understanding of the craft of knitting.

The designer of this pattern is a professional knitter and has a wealth of experience in the field. They have designed many patterns for a variety of projects and have a deep understanding of the craft of knitting.



TESTERS





KIMBERLY GILHOUSEN

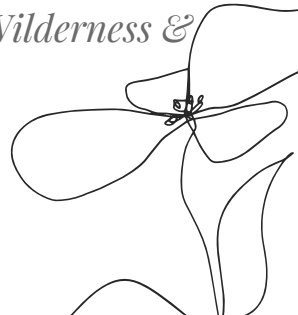
INSTA:

@40BELOW_MAMA_LIFE

RAVELRY: GINGERFIDDLER

Size 6

*Symfonie Yarns Terra In Wilderness &
Riverbank*



MODS

Extended body length by 18 row pairs to reach the top of hips.

Extended front and back Hem by 6 row pairs to create a deeper split

Used 1 hook size larger (3.5) for edging to fix bunching.

Accidentally doubled amount of slsts on bottom ribbing, but it made the hem lay smoother

COMMENTS

the slst ribbing took hours longer than expected, however the finished look gave it almost a professional/store bought quality and I plan to use it for future projects when I can







KHUSHBU

INSTA: @CROCHETRAINBOWS

RAVELRY: CROCHETRAINBOWZ

Size 3

Hobbii Unicorn Solid in Teal

MODS

Made the body longer measuring 10.25 inches from underarm before the split.

COMMENTS

I enjoyed testing this pattern very much. I love the fact that both the body length and the split depth are customisable as per preference. The stitch pattern created by using 3dc cluster on the WS is very unique and gives a beautiful texture to the sweater.





SUSIE

INSTA: @FINISHEDOBJECT

RAVELRY: SUSIEE

Size 1

Knitting for Olive, No Waste Wool in Slate Green

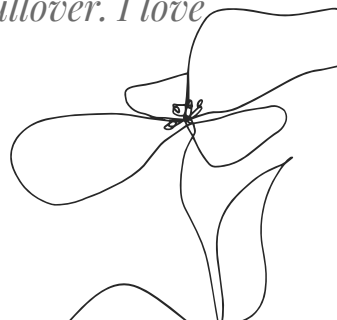


MODS

No modifications made to cropped pullover. I used a 3.0mm hook for the body, however I needed to move up to a 4.0mm hook for the ribbing.

COMMENTS

I like how easily the shoulder construction came together and how it looks on the back. The drape of the sweater is amazing, and the fit perfection. While sewing in ends, it dawned on me that there was not a hole or gap present in the entire pullover. I love that!





LUCIA

INSTA: @CROCHETWITHLU

RAVELRY: CROCHETWITHLU

Size 2

Scheepjes Whirlette in Cashew

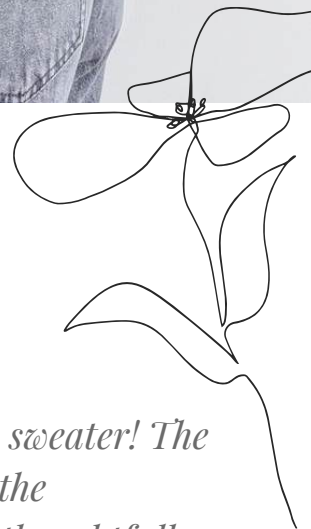
MODS

No modifications. I did the same number of row pairs as pattern sample after the split before the rounded corners for both the front and back.



COMMENTS

I thoroughly enjoyed testing this sweater! The construction is impressive, and the professional details Sandra has thoughtfully included really stand out. As always, the fit is perfect. I also appreciate the variety of modifications available, allowing makers to tailor the design to their individual preferences.





NAOMI BOXALL

INSTA: @MADEBYDRNOME
RAVELRY: DRNOME

Size 2

Dyeing to Knit, Sock Yarn, 100 g/400 m, 85% SWM, 15% nylon



MODS

18 row pairs from the under arm to increase body length (about 23 cm). As a note, I wanted to go full length (30.5 cm, 23 row pairs) but I ran out of yarn, so had to pull back to 18 row pairs to finish the project. Followed the same hemline split pattern that pattern sample did. Used a 4 mm hook for the whole project.

COMMENTS

I love the row pair stitch combo. Fell in love with it when I made Vesuvius and love it in this sweater. I also love the folded neckline and rounded, split hemline.





LAURA

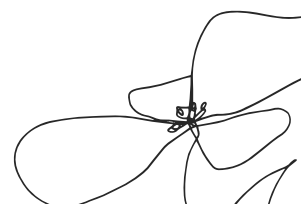
INSTA:

@ONE_PINKSUNSHINE

RAVELRY: N/A

Size 2

*Drops Baby Merino Uni Colour in
Wheat*



MODS

17 row pairs from the under arm to increase body length, I opted to only make the rounded corners after the split to have the same length at the back and the front.

COMMENTS

I really enjoyed making this sweater, the fit is perfect with so many customisation options to fit every taste and body type. The stitch pattern is very relaxing.





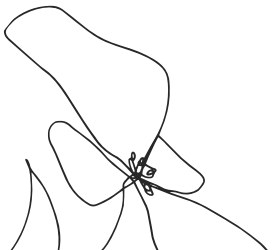
ELLEN

INSTA: @ELLEN.F489

RAVELRY: ELLEN489

Size 1

*Donegal Tweed Fine Homespun yarn in
Raspberry (Tahki Yarns)*



MODS

Followed instructions for cropped pullover with the 3 row pairs added in the split hem

COMMENTS

This pattern is so nice to do, it's easy to follow and so nice that you can modify it to how you want it to look in terms of short or long sleeves, longer or shorter split hem and length of front and back. I also love how the ribbing comes out – it is by far the best type of ribbing I have made and gives such a good look to the garment.





DIANE PAYES

INSTA: @VIDACONPIDA
RAVELRY: PIDAPOCKET

Size 2

*We crochet palette in calypso heather -
3.5 hook*



MODS

*Back extended by 5 row pairs; front
by 3 row pairs; size one sleeves for a
better fit for me.*

COMMENTS

*This is such a fun pattern and very
beginner friendly! I had no issues
with the blo slip stitch ribbing but
after testing many things for
Sandra, I learned to keep the
tension very relaxed.*





MADDIE BROUSSEAU

INSTA: @YARN CRAVE

RAVELRY: MADDIEB17

Size 3

Mandala String- Harmony colorway



MODS

I made 6 (I'm pretty sure. Might have been 8) more row pairs to lengthen the body, and I did not add extra row pairs for the high and low parts of the sweater.

COMMENTS

This stitch is so meditative! It's beautiful and kept my attention because of the unique construction. Figuring out exactly where I wanted it to sit on my hips and the bottom ribbing were the hardest parts for me. My advice would be to trust the pattern and keep going. But I'm so excited to wear this sweater!





ANDREA VU

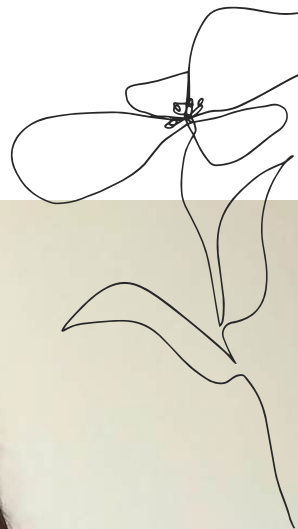
INSTA:

@ANDREA_IN_WOOL_DE_L
AND

RAVELRY: NDRAINWOOLDELAND

Size 2

Hawthorne Fingering in Volcano



MODS

I made half sleeves instead of long sleeves.

COMMENTS

I enjoyed testing this design so much. I love the top down structure, very unique compares to others.





SARAH GROBMAN

INSTA: @CHEFFGIRLY
RAVELRY: CHEFGIRLYSARAH

*Size 6
Cat sandwich fibers in jazzy plum*

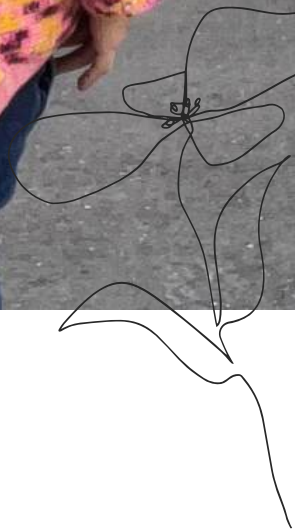


MODS

I changed the ribbing to blo sc

COMMENTS

The finished look is so stylish yet constructed from simple beginner friendly stitches.





SARAH EPPLIN

INSTA:

@SARAHE_CROCHETS

RAVELRY: SARAHE-CROCHETS

Size 3

*Knit One, Crochet Too Crock-o-Dye in
color 535 Greens*

MODS

*Made short sleeves and extended the
front and back hems (by 3 row pairs and
5 row pairs, respectively) before starting
the rounded corners. Omitted Hem
ribbing.*



COMMENTS

I love the construction of this sweater! It fits beautifully, and it kept my interest while working on it. I also love how easy it is to modify the length of the sleeves, body, hem, etc. to your personal taste. It feels like I've made a truly custom sweater for my body. My tip is to settle in with a blanket and a cozy drink because you'll have trouble stopping once you get started on this pattern! The only part I had trouble with was the slip stitch BLO ribbing – I ended up having to go up a hook size and crochet very loosely for the ribbing. It turned out really nice, but it was a bit of a pain to do.





EMILIE

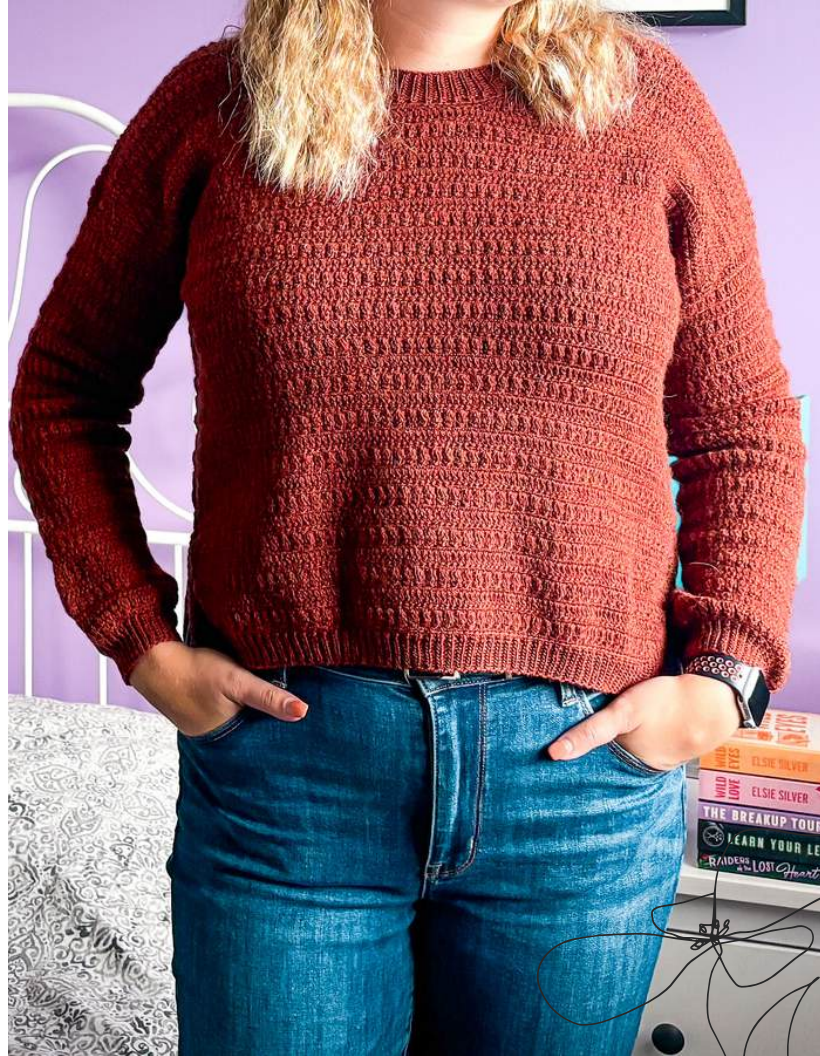
INSTA: @

EMILIEMAKESANDCREATES

RAVELRY: EMMAKESANDCREATES

Size 4

WeCrochet Palette in Autumn Heather



MODS

Made 14 row pairs from the underarm before slipping for the hem and then did 5 row pairs for the front and 9 row pairs for the back

COMMENTS

Sandra always has some of the best sweater construction out there that always makes for the best fit and this sweater is no different! And don't let the fingering weight yarn discourage you, you'll be amazed at how quickly this sweater works up, especially with the almost meditative row repeats.



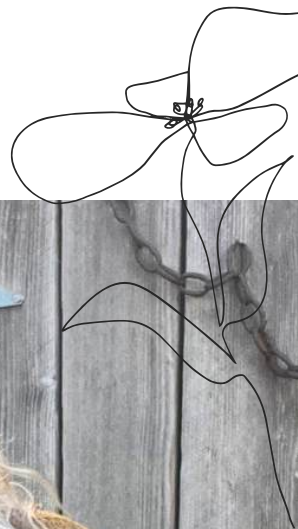


ELLIE FIFIELD

INSTA: @EFIFE15
RAVELRY: ELLIEHONEY

Size 4

*Retrosaria Rosa Pomar Mondim in
coloe C580*



MODS

*No modifications, followed row repeats
that matched the sample*

COMMENTS

*I am truly so happy with how this
design came out. Sandra has a way
with patterns that is truly unmatched
in consruction, stitch texture and fit.
Embrace custimation and enjoy the
sweater journey!*







KELI BRIDINGER

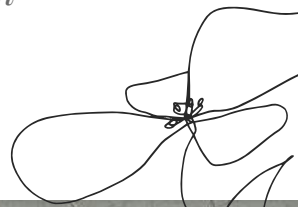
INSTA:

@FLOURISH_AND_YARNS

RAVELRY: FLOURISHANDYARNS

Size 7

*K + C Hand Dyed Cotton in
Strawberry Syrup*



MODS

Made a full-length top, to the same specs as the suggested length. Also did three row pairs before front hem shaping (as did the sample) and five row pairs before back hem shaping (as did the sample). I made sure to do the hem ribbing VERY loosely so that there was minimal puckering.

COMMENTS

The texture of this pattern makes the sweater look very complex, yet it's so easy to make! I'm so excited to wear my cotton sweater for years to come.

